

FME SERIES

Compact Miniature Connectors

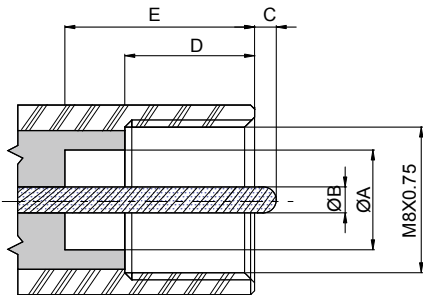
FEATURES

FME are low cost 50ohm connectors suitable for applications up to 2 GHz. Their small dimensions facilitate the installation of cables in vehicles. FME connectors are usually used in mobile antenna applications.

INTERFACE MATING DIMENSIONS

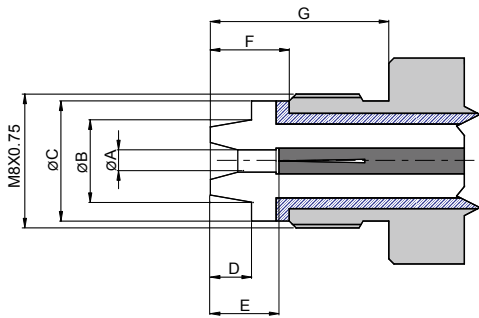
FME

PLUG:



Letter	Millimeters(Inch)	
	Minimum	Maximum
A	4.70(.185)	–
B	1.25(.049)	
C	–	1.00(.039)
D	6.40(.252)	–
E	9.00(.354)	–

JACK:



Letter	Millimeters(Inch)	
	Minimum	Maximum
A	1.35(.053)	
B	–	4.60(.181)
C	–	6.80(.268)
D	–	2.60(.102)
E	4.00(.157)	5.00(.197)
F	4.90(.193)	–
G	7.60(.299)	–

TECHNICAL DATA

ELECTRICAL DATA	
Dielectric Withstanding Voltage (at sea level, in V rms, 50Hz)	1000
Working Voltage (at sea level, in V rms, 50Hz)	100
Impedance	50 Ω
Frequency Range	DC up to 2 GHz
Insulation Resistance	$\geq 5000M \Omega$
Contact Resistance Inner Conductor	$\leq 10m \Omega$
Contact Resistance Outer Conductor	$\leq 5m \Omega$

MECHANICAL DATA	
Durability (matings)	500(min)

FME

MESA MICROWAVE

FME

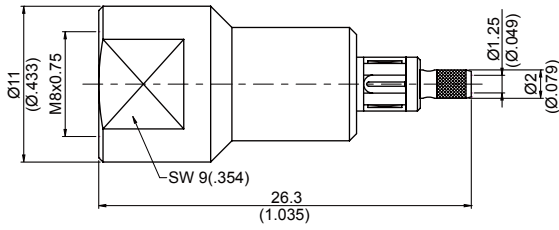


Figure 1

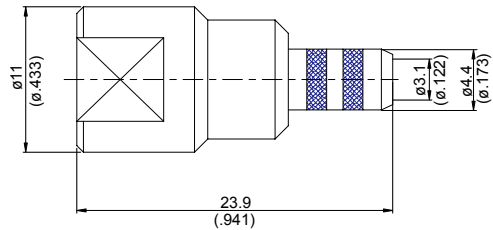


Figure 2

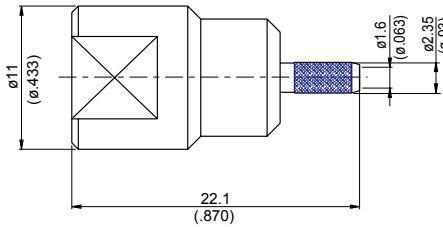


Figure 3

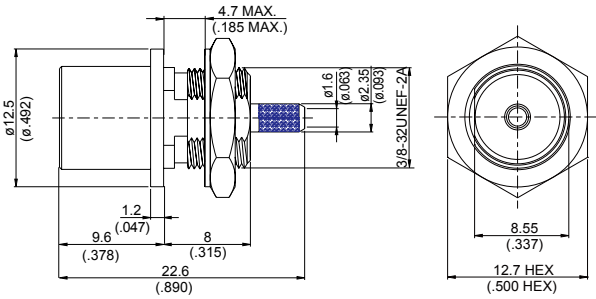


Figure 4

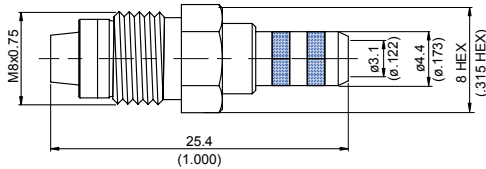


Figure 5

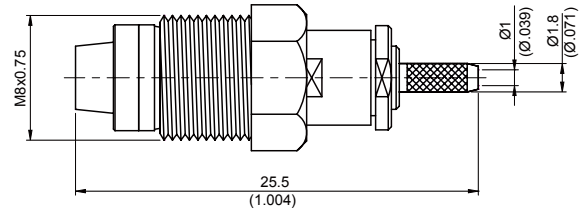


Figure 6

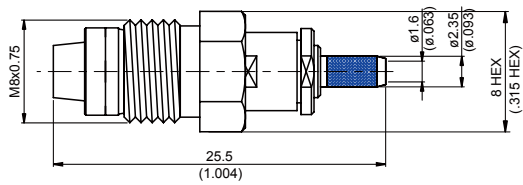


Figure 7

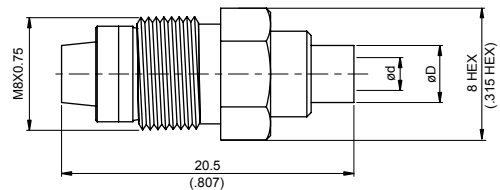
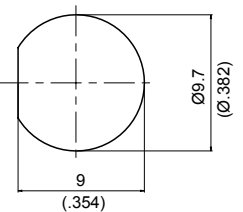


Figure 8

PART NUMBER	Fig.	Measurements	M.H	Weight	Material	Suitable Cable	Remarks
FME PLUG CRIMP							
MMCFMCP-1.13	1				A2	1.13mm Coaxial Cable	
MMCFMCP-058	2			7.0g	A2	RG58, M195	
MMCFMCP-142	2				A2	RG55, RG142, RG142-E, RG400	
MMCFMCP-0316	3			4.99g	A2	RG174, RG188, RG316, RG316-E, RG316-FEP	
MMCFMCP-0316D	3				A2	RD316, RG316D-E, RD316-FEP	For Double Shielded 316
FME PLUG CRIMP FOR BULKHEAD							
MMCFMBHCP-0316	4		4		A2	RG174, RG188, RG316, RG316-E, RG316-FEP	No Gasket
MMCFMBHCP-0316D	4		4		A2	RD316, RG316D-E, RD316-FEP	No Gasket; For Double Shielded 316
FME JACK CRIMP							
MMCFMCJ-058	5			4.44g	C2	RG58, M195	
MMCFMCJ-142	5				C2	RG55, RG142, RG142-E, RG400	
MMCFMCJ-223	5				C2	RG223	
MMCFMCJ-178	6			4.1g	C2	RG178, RG178-FEP, RG196	
MMCFMCJ-316	7			6.02g	C2	RG174, RG188, RG316, RG316-E, RG316-FEP	
MMCFMCJ-316D	7				C2	RD316, RG316D-E, RD316-FEP	For Double Shielded 316
FME JACK SOLDER							
MMCFMSJ-085	8	ød=2.30(.091) øD=4(.157)		3.43g	C2	Semi-rigid .085	
MMCFMSJ-141	8	ød=3.65(.144) øD=5(.197)		3.26g	C2	Semi-rigid .141	



M.H 4